

**COLOUR-CODED PARTS:**

**POD LOWER ASSEMBLY:**

- S08-009-01211 (RED)
- S08-009-01254 (BLUE)
- S08-009-01271 (SILVER)

**FOOTWELL SHROUD ASS'Y:**

- S08-040-00111 (RED)
- S08-040-00154 (BLUE)
- S08-040-00171 (SILVER)

**BATTERY SHROUD ASS'Y:**

- S08-040-00211 (RED)
- S08-040-00254 (BLUE)
- S08-040-00271 (SILVER)

S05-023-00100  
FRONT WHEEL ASS'Y

**SEPERATE COMPONENTS AVAILABLE:**

- FROM THE FOOTWELL SHROUD ASS'Y**  
 C26-040-00200: RH RUBBER FOOT MAT  
 C26-040-00100: LH RUBBER FOOT MAT

- FROM THE DRIVE ASSEMBLY:**  
 C09-001-10101: 350W MOTOR  
 C09-007-00300: TRANSAXLE  
 C09-040-00400: EM BRAKE (C/W MICROSWITCH)  
 L40900600020: CARBON BRUSH  
 L4090130020: CARBON BRUSH CAP

- FROM THE FRAME:**  
 C28-027-00100 - ANTI-TIP WHEEL

**FROM THE TILLER POD:**

- S12-009-00800 - THROTTLE POT
- M41100300000 - BATTERY GAUGE
- 3D3701100000 - KEYS
- M41610104000 - LIGHTS SWITCH
- M41610202000 - HORN BUTTON
- 3D18005000000 - IGNITION

**FROM THE FRONT SHROUD ASS'Y:**

- C01-040-00200: BUMPER
- C13-040-00200: HEADLAMP

**FROM THE REAR SHROUD ASS'Y:**

- C14-040-00200: REAR LAMP



Ainley's Industrial Estate, Elland HX5 9JP  
 T: +44 (0) 1422 314488  
 E: enquiries@drivemedical.co.uk  
 W: www.drivemedical.co.uk/technical

TITLE:



NEO 4 SCOOTER (MS040)  
 PARTS CATALOGUE

DATE:

11/06/07

SHEET No:

1 of 2

DRAWN:

PMK

CHECKED:

REVISION No:

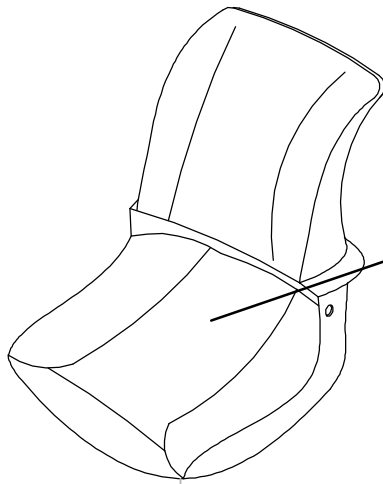
-

SCALE:

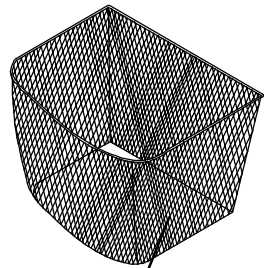
NTS

DWG No:

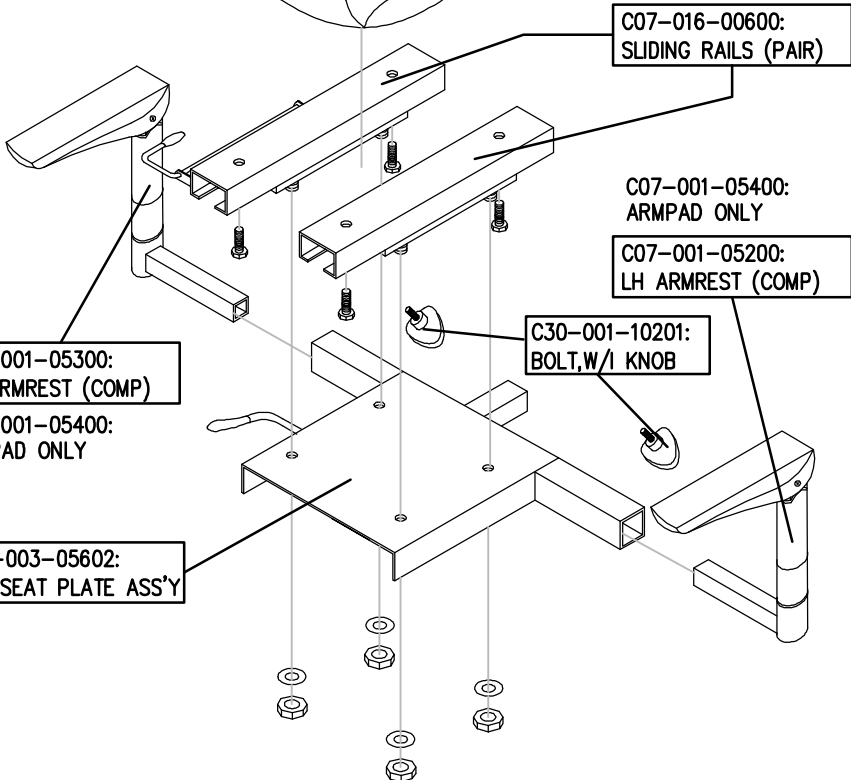
Z40945



SEATM07:  
SEAT ASSEMBLY



C23-009-00200:  
FRONT BASKET



C07-016-00600:  
SLIDING RAILS (PAIR)

C07-001-05400:  
ARMPAD ONLY

C07-001-05200:  
LH ARMREST (COMP)

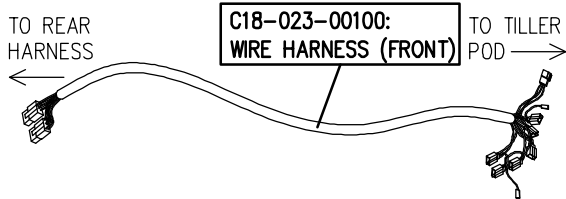
C30-001-10201:  
BOLT, W/1 KNOB

C07-001-05300:  
RH ARMREST (COMP)

C07-001-05400:  
ARMPAD ONLY

C07-003-05602:  
STD SEAT PLATE ASS'Y

C12-023-00100  
4A CHARGER

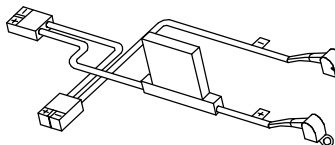
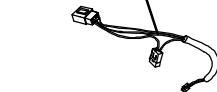


C18-023-00100:  
WIRE HARNESS (FRONT)

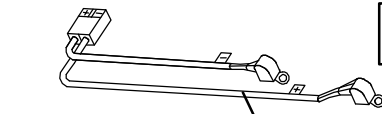
TO REAR HARNESS

TO TILLER POD

C12-009-00800:  
CHARGER SOCKET LEAD



C18-001-10301:  
BATTERY LEAD (+)



C18-001-10401:  
BATTERY LEAD (-)

C16-009-00100  
30A CIRCUIT BREAKER



C18-023-00301:  
WIRE HARNESS (REAR)



C18-007-00900:  
EM BRAKE LEAD



**drive**  
MEDICAL DESIGN & MANUFACTURING

Ainley's Industrial Estate, Elland HX5 9JP  
T: +44 (0) 1422 314488  
E: enquiries@drivemedical.co.uk  
W: www.drivemedical.co.uk/technical

TITLE:



NEO 4 SCOOTER (MS040)  
PARTS CATALOGUE

DATE:

11/06/07

SHEET No:

2 OF 2

DRAWN:

PMK

CHECKED:

REVISION No:

-

SCALE:

NTS

DWG No:

Z40945