

**COLOUR CODED PARTS:**

**FRONT TILLER SHROUD:**  
 S08-029-01011 - RED  
 S08-029-01051 - BLUE  
 S08-029-01041 - GREEN  
 S08-029-01061 - BLACK  
 S08-029-01071 - CHAMPAGNE

**BACK TILLER SHROUD:**  
 S08-029-00211 -RED  
 S08-029-00251 - BLUE  
 S08-029-00241 - GREEN  
 S08-029-00261 - BLACK  
 S08-029-00271 - CHAMPAGNE

**FRONT SHROUD ASSEMBLY:**  
 S08-029-00311 - RED  
 S08-029-00351 - BLUE  
 S08-029-00341 - GREEN  
 S08-029-00361 - BLACK  
 S08-029-00371 - CHAMPAGNE

**SEPERATE COMPONENTS AVAILABLE:**

**FROM THE TILLER:**  
 SEE OVERLEAF

**FROM THE FRONT FRAME:**  
 C01-029-00800 - FRONT BUMPER

**FROM THE FRONT SHROUD:**  
 C26-029-00100 - LH FOOTREST PAD  
 C26-029-00200 - RH FOOTREST PAD

**FROM THE HEADLAMP:**  
 C13-022-00900 - BULB

**medicaretechnology**  
 LIMITED

Ainley's Industrial Estate, Elland HX5 9JP  
 T: +44 (0) 1422 314488  
 E: enquiries@medicaretechnology.com  
 W: www.medicaretechnology.com/technical

TITLE:

**Regatta**  
 REGATTA  
 PARTS MANUAL

DATE:

02/01/07

SHEET No:

1 of 3

DRAWN:

PMK

CHECKED:

REVISION No:

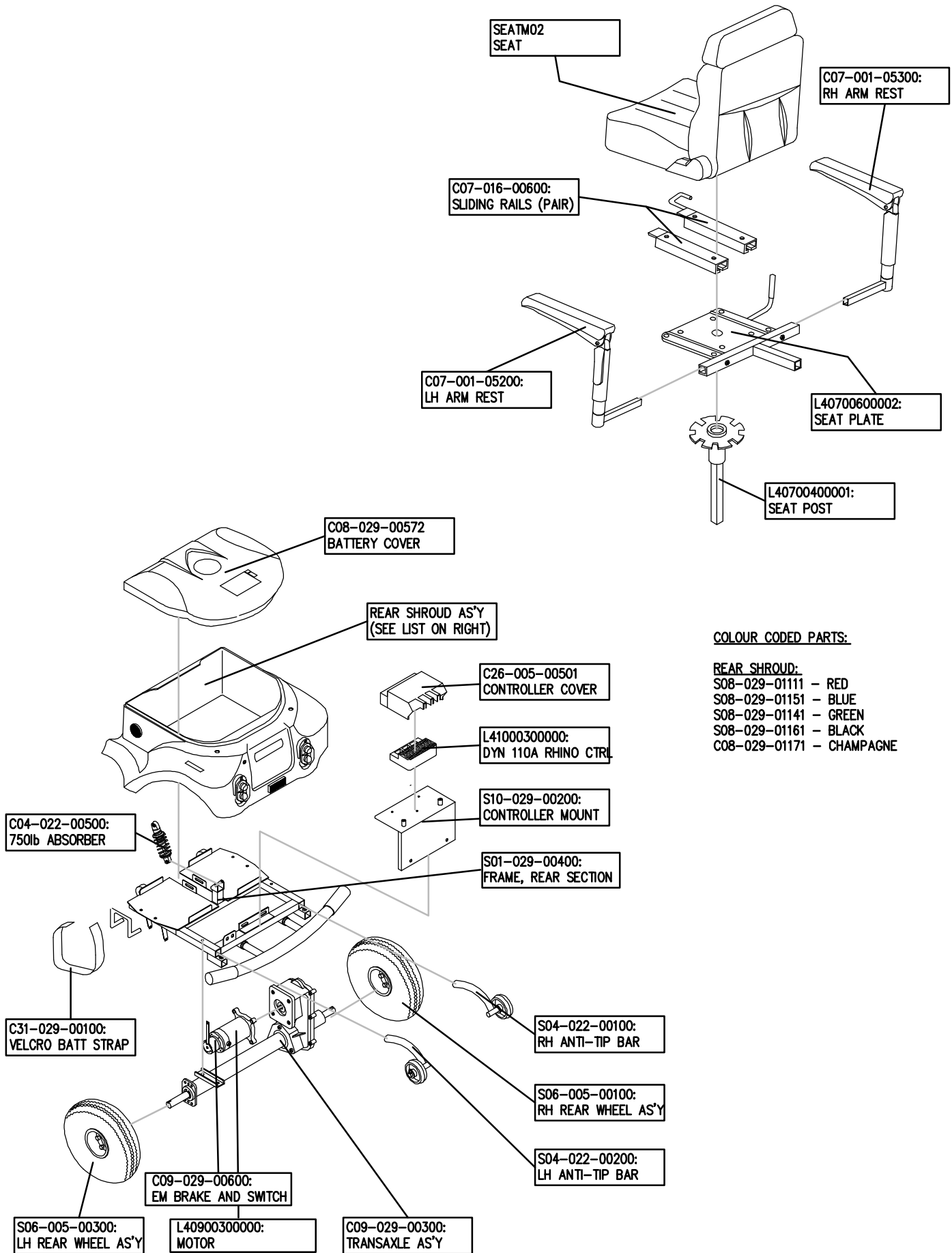
-

SCALE:

NTS

DWG No:

Z40957



**COLOUR CODED PARTS:**

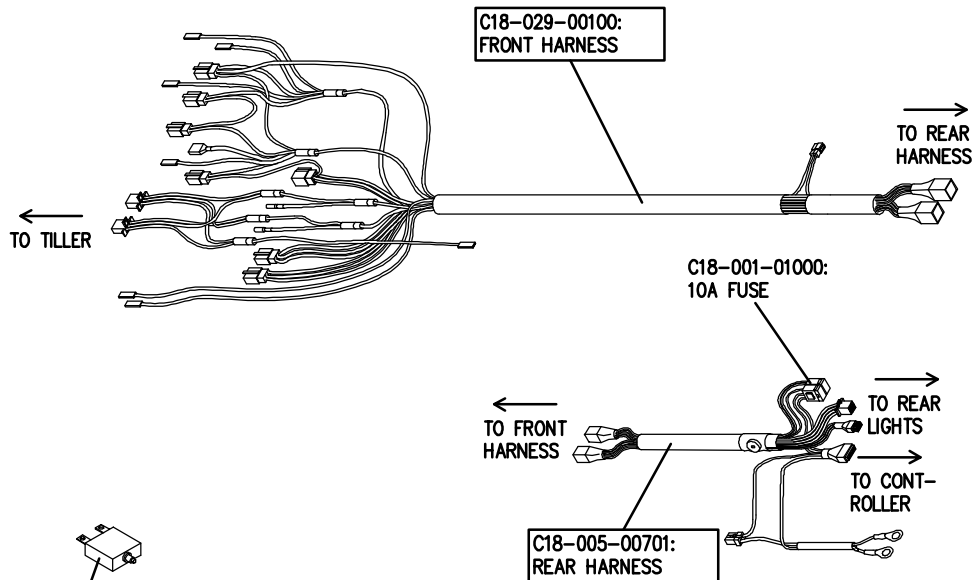
- REAR SHROUD:**  
 S08-029-01111 - RED  
 S08-029-01151 - BLUE  
 S08-029-01141 - GREEN  
 S08-029-01161 - BLACK  
 C08-029-01171 - CHAMPAGNE

**OTHER PARTS AVAILABLE:**

C12-001-02000: 5A CHARGER  
Z20972: 7A CHARGER

C17-029-00500: 20A FUSE

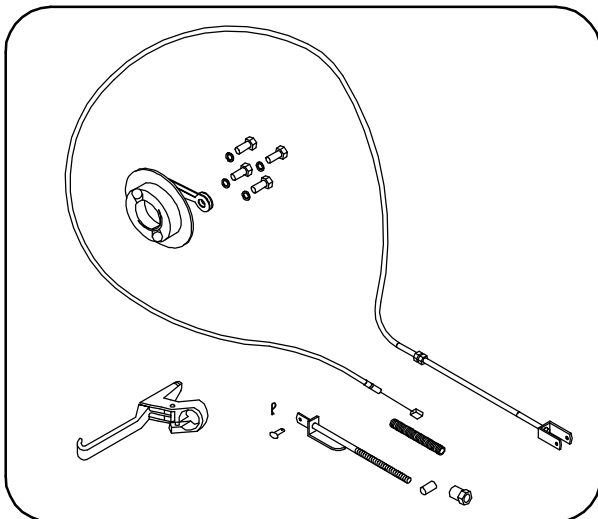
12V40AH: 44Ah BATTERY  
12V70AH: 70Ah BATTERY  
(SMALL CASE)



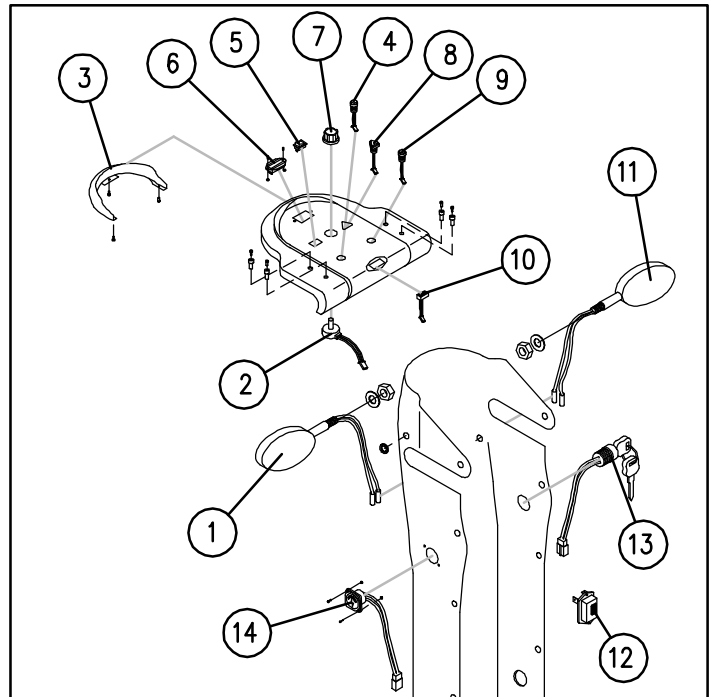
C16-001-10601:  
50A CCT BREAKER

C17-029-00100:  
BATTERY CABLE (-)

C17-029-00200:  
BATTERY CABLE (+)



S35-011-00100:  
CABLE BRAKE AS'Y



**TILLER PARTS AVAILABLE:**

1. C16-022-01300: LH FRONT SIGNAL LAMP
2. M41100300000: SPEED POT
3. C08-022-03100: SHADE
4. C16-022-00500: HEADLAMP SWITCH
5. M41610401000: INDOOR / OUTDOOR SWITCH
6. C11-022-00100: BATTERY INDICATOR
7. 3D2600200000: SPEED DIAL KNOB
8. L41600100000: HAZARD SWITCH
9. C16-022-00700: HORN BUTTON
10. C11-001-00700: INDICATOR (SIGNAL) SWITCH
11. C16-022-01500: RH FRONT SIGNAL LAMP
12. C12-001-10701: FLASHER RELAY
13. M41810807000: IGNITION SWITCH AS'Y
14. M41210216000: CHARGER SOCKET

**medicaretechnology**  
LIMITED

Ainley's Industrial Estate, Elland HX5 9JP  
T: +44 (0) 1422 314488  
E: enquiries@medicaretechnology.com  
W: www.medicaretechnology.com/technical

TITLE:

**Regatta**  
REGATTA  
PARTS MANUAL

DATE:

02/01/07

SHEET No:

3 of 3

DRAWN:

PMK

CHECKED:

REVISION No:

—

SCALE:

NTS

DWG No:

Z40957